

CERTIFICATE OF LOCATION OF GOVERNMENT CORNER

EAST QUARTER Corner of Section 22, Township 106, Range 39, 5TH P.M.

STATE OF MINNESOTA, County of MURRAY

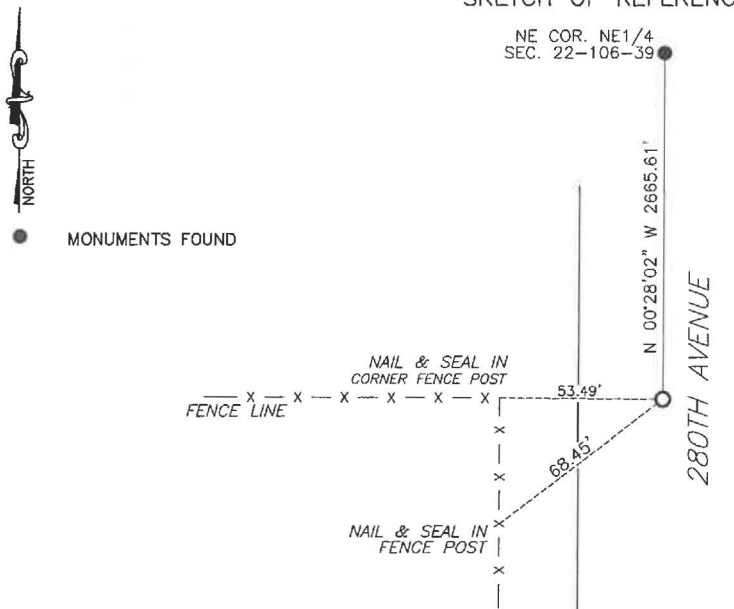
At the corner location shown on the sketch:

☒ On 8/12/2024 found a concrete monument. Set a 5/8" iron along north side.
DATE

☒ left monument as found, ☐ lowered monument, ☐ removed monument (explain)

☒ On 1/29/2025 placed a 5/8" iron with seal #43844 over top of the concrete
DATE monument.

SKETCH OF REFERENCE TIES



Murray County
Coordinate System NAD83 (1996)

N: 145055.918
E: 569528.905

WGS84

LAT: 43°58'16.8204"
LON: -95°30'09.3172"

Statement of evidence relative to this corner location is on back of page.

I hereby certify that this document and the data
contained herein was prepared by me or under
my direct supervision

Daniel L. Buettel
License No. 43844

3/13/2025
DATE

MAR 13 2025

Karen Brown
MURRAY COUNTY RECORDER

Statement of Evidence

EAST QUARTER CORNER SECTION 22, T106N, R39W OF THE 5th P.M.

In September 1858 W.J. Neely surveyed the east township line.

In July of 1861 J.W. Myers surveyed the north, south, and west township lines.

In August of 1861 Wellman & Smoot subdivided the township.

County records dated 1967 notes a concrete monument found at the corner and a steel pin was placed above it.

County records dated May 16, 2012 located a $\frac{3}{4}$ " steel pin 1 foot east of centerline.

On August 12, 2024 Buelte-Moseng Land Surveying found a $\frac{3}{4}$ " iron, removed and dug for concrete monument. Found the concrete monument down 3' laying on its side. We reset the concrete monument using the coordinates of the $\frac{3}{4}$ " iron and placed an iron on the north side of the concrete monument.

Returned on January 29, 2025 and set a $\frac{5}{8}$ " iron with seal #43844 overtop of the concrete monument.